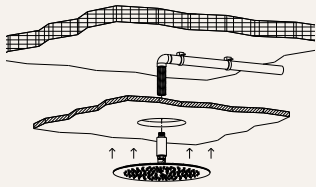


## FALSE CEILING SHOWER HEAD INSTALLATION KIT

Kit for installation of MySlim and Ottomillimetri shower heads flush with false ceiling



Use of inspectable and serviceable shower heads is recommended



Patented



ART

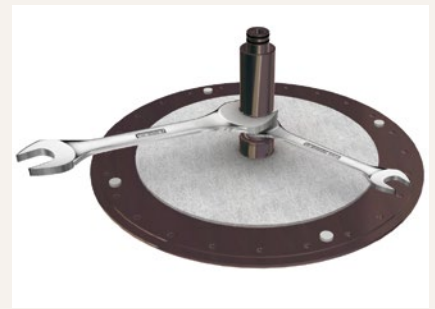
KIT00006



**A**  
Arrange a ceiling connection with G 1/2" M outlet in the proximity of the location of the shower head to be installed and a false ceiling at a distance from the G 1/2" M outlet between 135 mm and 160 mm.



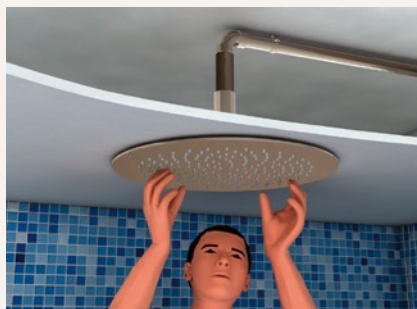
**B**  
Prepare a hole of approximately Ø 150 mm in the false ceiling near the plumbing connection, screw hermetically the threaded fitting using a 24 mm wrench with hemp or similar materials.



**C**  
Apply the provided felt pads and the protective gasket on the top surface of the shower head. Then screw the adjustment kit on the shower head by using a wrench of 24mm and 22mm.



**D**  
Insert the shower head with adjustment kit into the hole near the threaded fitting.



**E**  
Tighten the shower head by hand as shown in the figure.



**F**  
When installation is complete, ensure that the shower head is perfectly stick to the false ceiling.